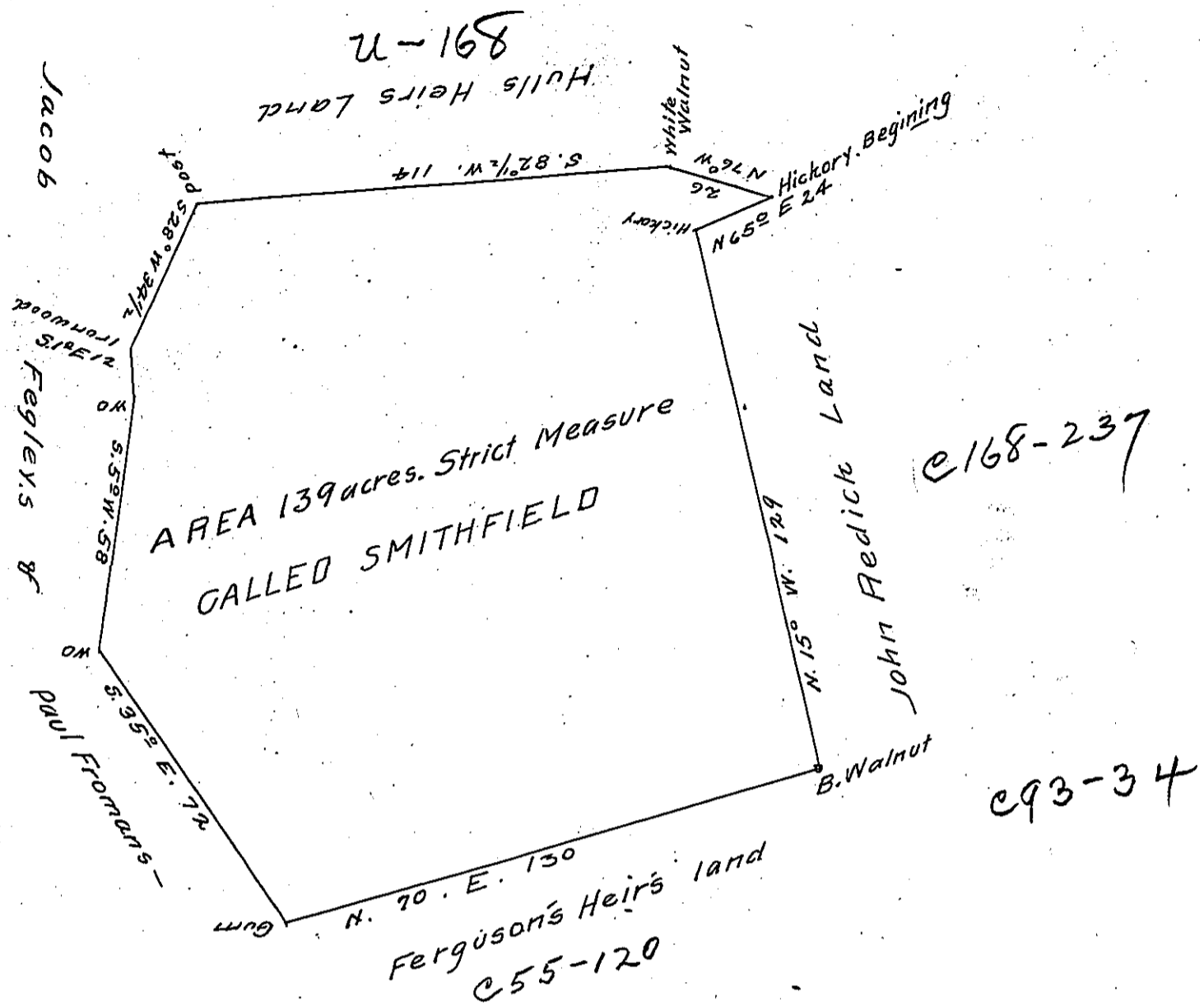


55-120 &
D 38-220



The above is a draught of 139 acres of Land strict measure situate on the Waters of Mingo Creek in Washington County and was surveyed on part of a Virginia Entry calling for Four-hundred acres of land which said entry was granted by the Commissioners of Virginia to Francis Hull and is dated the 13th day of November 1779. The same survey was executed by vertue of ss^d entry and was surveyed for Robert Porter in obedience to the orders of the Honourable the Board of Property, and by vertue of a warrant of resurvey dated the 27th day of April 1798 to me directed by the Surveyor General of Pennsylvania.

Thomas Stokely D.S.

Daniel Brodhead Esquire
Surveyor General of Pennsylvania

IN TESTIMONY that the above is a copy of the original remaining on file in the Department of Internal Affairs of Pennsylvania, made conformably to an Act of Assembly approved the 16th day of February, 1833, I have hereunto set my Hand and caused the Seal of said Department to be affixed at Harrisburg, this nineteenth day of June 1906

Loac R. Brown
Secretary of Internal Affairs.